

"Check out my website at: www.montanaparadiserealty.com"

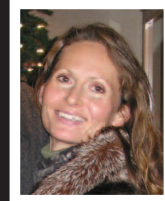
Montana PARADISE REALTY LLC

Thompson Falls, MT

406-827-0601

Fax: 827-0607

(406) 827-0601



Karen Evans
Broker owner

THOMPSON FALLS MONTANA

A Rare Find



50+ Acres of Montana, bordered by National Forest. Mostly South-facing. Good producing well w/great water, power and all the utilities. Easy access off county road only a few minutes from Trout Creek, MT. This is a one-of-a-kind property! ~~\$350,000~~ REDUCED TO \$239,000.

Hand-Crafted Log Cabin!



New log cabin on 2+/- Acres close to the beautiful Noxon Reservoir! Fully fin'd with cathedral ceilings and beautiful cabinets. Has 2 bedrooms 1 bath (+ unfinished daylight basement with another bath roughed-in). Private from neighbors, easy access, lots of wildlife! ~~\$179,000~~. NOW! \$169,000

Great 20 Acres near National Forest!



The perfect mix of trees and meadows, all level useable land. Large 36 x 46 shop, septic & 25 GPM well! Good sun exposure, private, very few covenants. Great for horses! ~~Only \$235,000!~~ REDUCED! \$229,950

**Some Properties are Broker Owned*

Foreclosure Home - 3 Ac w/Creek



3 Acres with Rushing Creek near National Forest! Home is frame built, beautifully remoled w/cedar & log accents! New hickory cabinets in kitchen, pine-accented living room, etc. Very private property w/easy access --only 4 miles to town. Next to USFS access with miles of Forest Service roads to explore! Perfect for year-round living or a great get away! **Must Sell ONLY \$179,000!**



Easy access and very private, 6+ miles to T.F., located in the Little Beaver Creek area. Extra large 40'x38' shop building for all the 'toys'! (Appraised at \$730,000 replacement cost.) ~~\$595,000~~ REDUCED for QUICK SALE! Now Only \$399,000!

Your Dream Home on 20 Acres with shared River Access



Newer 3600 sq. ft. home with privacy, trees, meadows, and beautiful views. 5 miles from Plains. Cathedral pine living room and 9' ceiling throughout the rest of the home. 3 bedrooms and 2.5 baths on main floor, plus a 1 bedroom mother-in-law apartment, includes living room, bath and kitchenette in the day-light basement with private french door access. Main floor has a luxurious master suite with jetted tub, shower, double sinks, etc. Large kitchen with custom knotty alder cabinets. Plus upstairs Bonus room and office. Full 2 car attached garage. You must see this home! \$499,000

Hard to Beat! Has it All!

4300 sq. ft. Victorian brick home w/att'd 2 car garage and fin'd bsmnt., on 10 acres! White vinyl fencing, undergrnd. sprinklers, large pond and rock-stamped patio with fire pit. Home has solid oak hardwood floors, 4+bdrms., 4 1/2 baths plus Bonus rooms and Media Room with Wet Bar in bsmnt. Kitchen and baths have rock counter tops. Large Master suite with many extras. Formal dining room and living room, large kitchen with breakfast nook, and large family room Nice mix of trees and meadows.

Timber Meadows - 2 to 5 ac. parcels!



2 to 5 Ac parcels --Awesome mountain views & aspen meadows. Close proximity to a private beach on the pristine Noxon Reservoir. --Perfect for fishing swimming. --Great for horses, easy access. --Ideal for your dream home or just your own private camping spot. --Utilities are close to each parcel and septic approved. Starting at \$49,000.

NEW LISTING!



Log Home w/Spectacular Views! 10 Acres! Like new 3500+ sq. ft. log home with gorgeous view of the mountains, river rock fire place, hickory cabinets, and much more! Also has luxurious master bath, daylight bsmnt, and 2 car log garage. 10 Acres of timber and meadows... Everything you've dreamed of in Montana! Very private setting w/easy access -- 10 minutes to town. Only \$425,000!

**Note: All information is from sources deemed reliable, but is not guaranteed by Montana Paradise Realty, LLC or its agents. We urge independent verification of each and every item submitted to the satisfaction of any prospective purchaser.*